

# Van complex probleem naar eenvoudige oplossing

Matthijs Schonewille | Richard van der Kamp



# Programma

- Even voorstellen
- Aanleiding Design Sprint
- Basisingrediënten
- Design Sprint
- Vragen



# Aanleiding



Jake Knapp

# Aanleiding



# Aanleiding



# Aanleiding



# Aanleiding



# Aanleiding





# Aanleiding



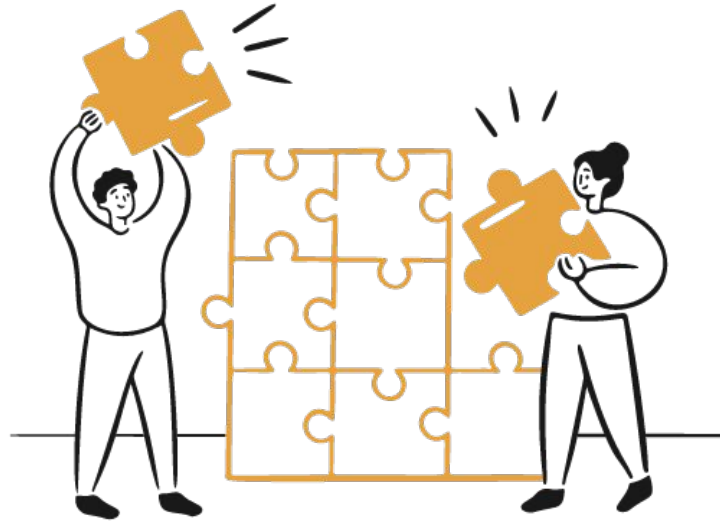
# Aanleiding



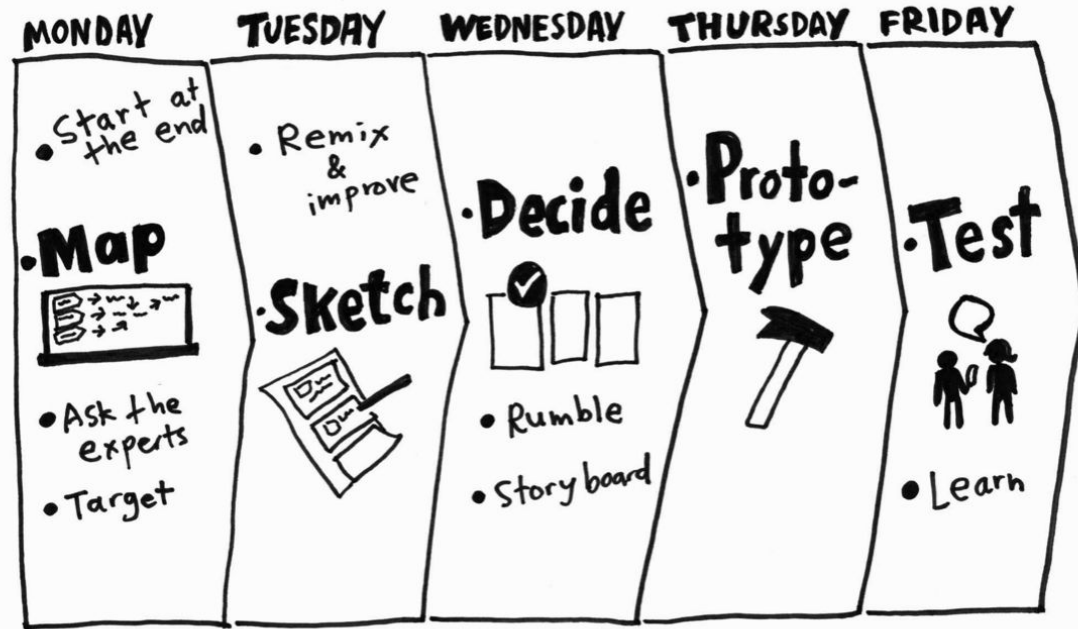
# De uitgever, het boek en Alice



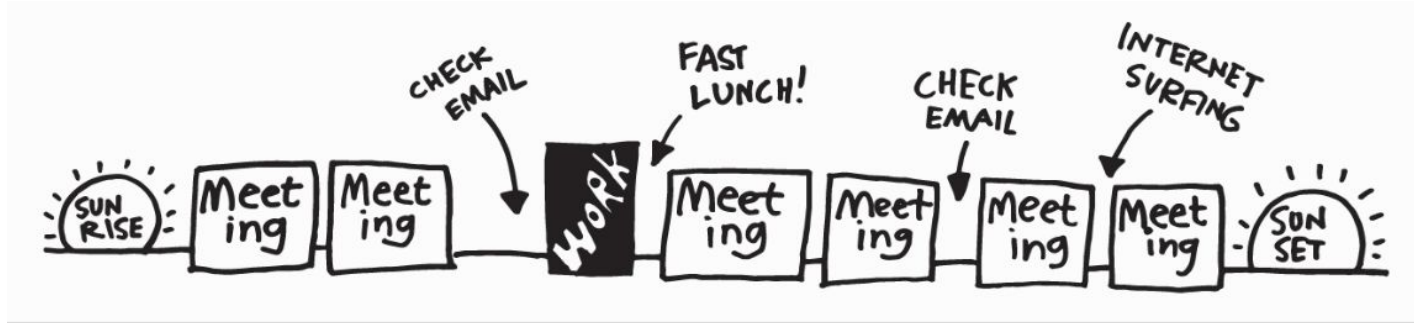
# Resultaat



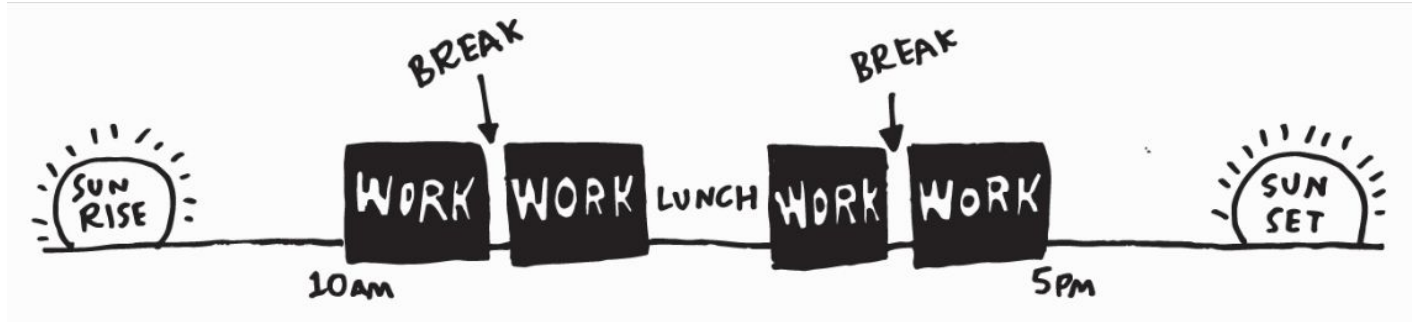
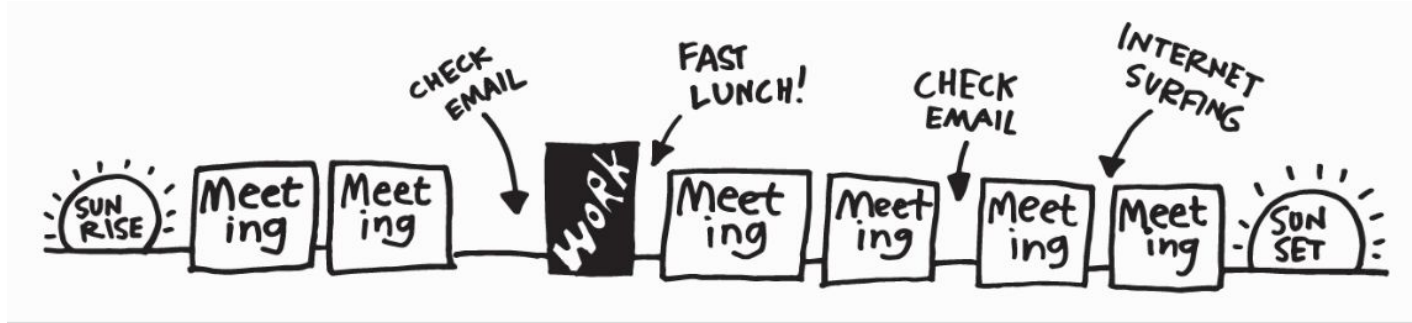
# Design Sprint



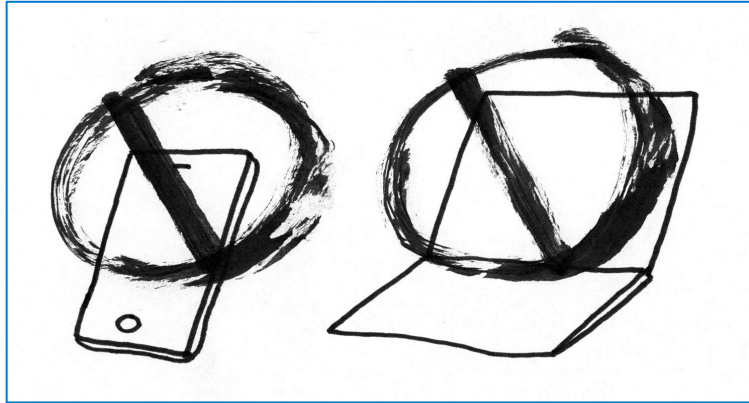
# Design Sprint



# Design Sprint



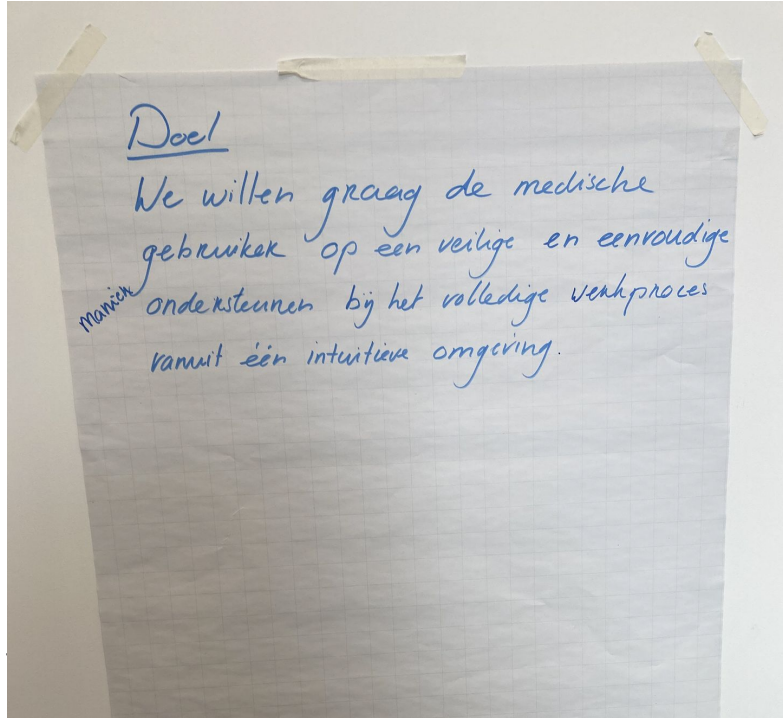
# Basis ingrediënten



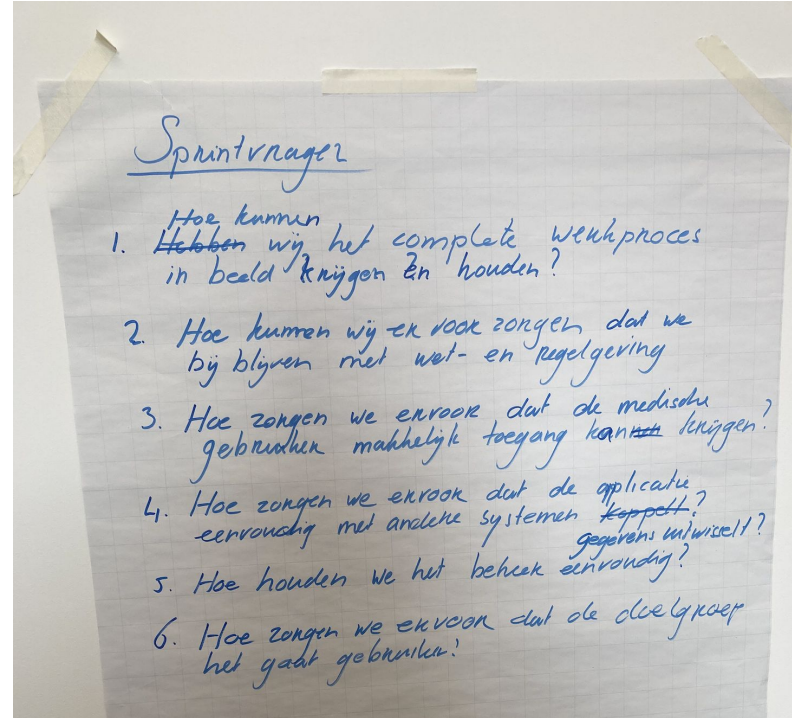


# Maandag | Probleemstelling en doel

## Probleemstelling en doel

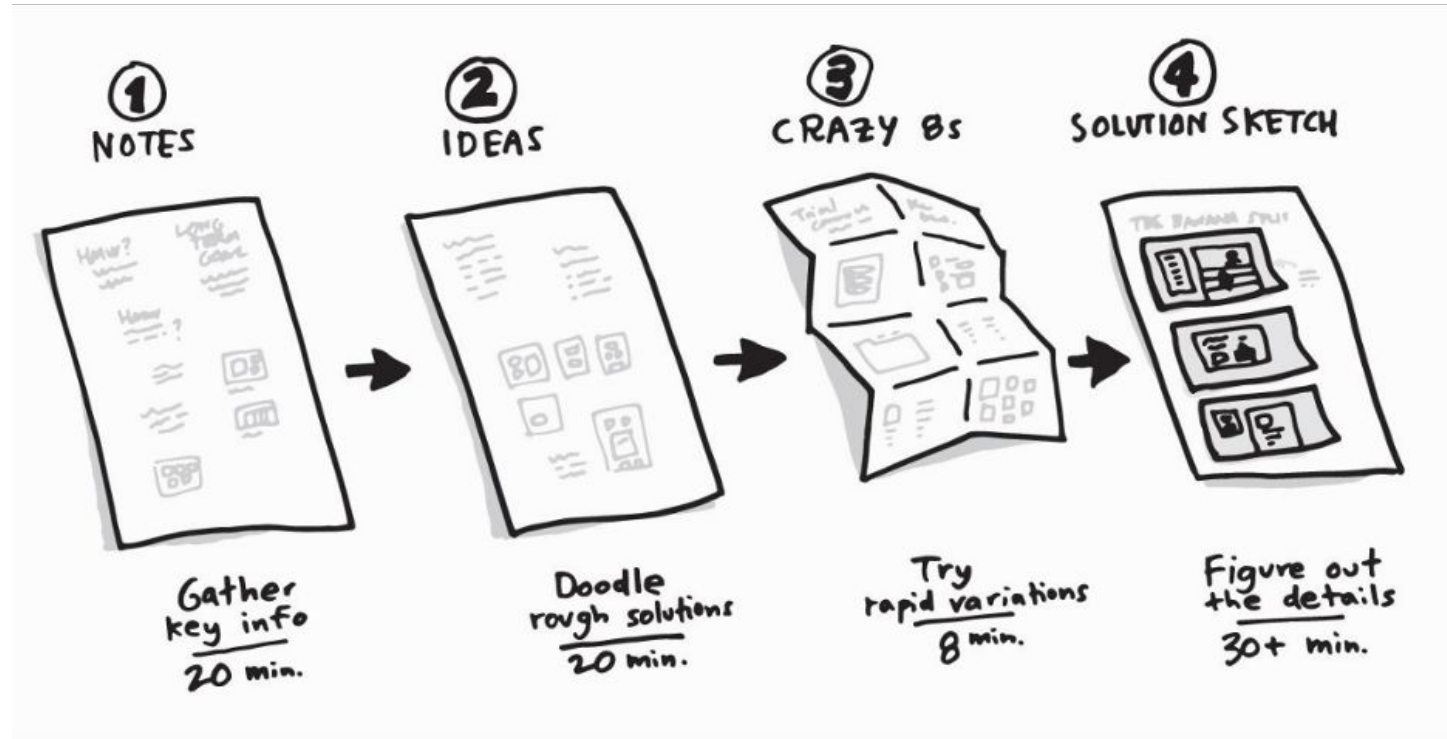


## Sprintvragen





# Dinsdag | Sketch



# Woensdag | Art museum

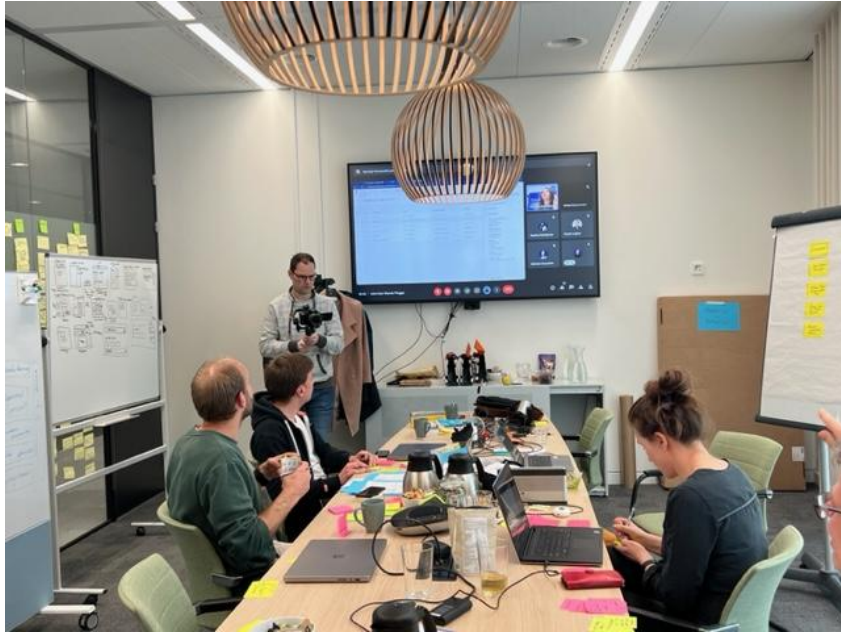


# Donderdag | Prototype

The screenshot displays a Figma workspace for a design sprint titled "Design sprint medisch april 2023 / prototype EMD". The interface is divided into several key areas:

- Layers Panel (Left):** Lists various components and pages, including "calendar prototype", "employer/dashboard", "dashboard", "dropdown", "User modal start verrichting / werknemer menu", "User info modal / Afspraken", "User info modal / Contactpersonen", "User info modal / Poortwachter", "User info modal / Documenten", "User info modal / Notities", "User info modal / tijdlijn", "Notities", "Verrichtingdossier", "User info modal / verrichtingdossier", "User info modal / dossier", "search do search", "search start", "dropdown", and "Werknemer overlay".
- Central Canvas:** A complex network of wireframe screens connected by blue flow lines. The screens represent different states of the application, such as "Desktop - XXL - info sidebar initial visible", "Desktop - L - info sidebar initial h...", "User info modal / verrichtingdossier", "User info modal / dossier", "User info modal / tijdlijn", and "User info modal / Afspraken".
- Prototype Panel (Right):** Contains settings for the current frame, including "Device" (None), "Background" (000000), and "Prototyping" (Flow 1). It also features a "Running your prototype" section with instructions: "Use the play button in the toolbar to play your prototype. If there are no connections, the play button can be used to play a presentation of your frames."

# Vrijdag | Interviews



# Design Sprint

Van complex probleem naar **eenvoudige oplossing**



# Vervolg programma



# 14.00- 14.35 uur - Break-out sessies

- Plenaire zaal: Minimaliseer verzuim: 80% minder afwezigheid dankzij betrokken medewerkers - Pim Monquill, Dailog
- Zaal B2: Hoe het Elektronisch Medisch Dossier bedrijfsartsen ondersteunt – Visma Verzuim
- Zaal B4: MySigns: bekijk je data eens door een andere bril - Simon Baysoy en Henk Smeijers, Datavisual

